



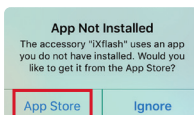
iXflash Q mini

iPhone/iPad Quick Start Guide

English version v1.0

1) Download App

Download and Install the free iXflash Q mini App from the Apple App Store.



2) Insert Memory Card

Insert any microSD* card, up to 2TB, into the iXflash Q mini microSD Slot.

*microSD Card not included. Recommended to use a high-speed microSD card for best performance.



3) Connect to Your iPhone or iPad

When using an iPhone/iPad with a USB-C connection, insert the iXflash Q mini USB-C connector into it.



4) The iXflash App should open once the iXflash Q mini is connected.

If not, tap the iXflash App that looks like this:



The following are a few of the Key Functions for the iXflash Q mini:

5) Backup & Restore

Touch the Backup & Restore icon to backup all or selected photos/videos stored on your iPhone/iPad and iCloud*

*Must be connected to the internet via Wi-Fi or Cellular Data to backup iCloud.



6) Capture & Save Videos/Photos Directly onto the microSD card in the iXflash Q mini Drive

1. Touch the Camera icon
2. Record video(s) or take photo(s) through the iXflash App camera feature
3. All video(s) and image(s) will be stored directly onto the microSD Card inside the iXflash Q mini drive, without using the iPhone/iPad's internal memory



7) Watch All Your Videos with Ease

1. One touch to watch your last viewed video.
2. View playback history
3. User-friendly interface supports fast-forward / backward and volume adjustment simply by using the swipe and /or double-tap gestures, for example:



| Fast backward/forward 10 sec



| Adjust Brightness



| Adjust volume

8) File Manager

Able to view, move, play, and manage all files stored on the microSD Card inside the iXflash Q mini drive.



9) View and Manage Files on a Computer

1. Connect the iXflash Q mini into any corresponding USB port* on a computer
2. Open the drive associated with the iXflash Q mini on the computer.
3. Access any files stored on the microSD card in the iXflash Q mini.

*Use adaptor for USB-A port if needed



iXflash Q mini

iPhone/iPad Quick Start Guide

English version v1.0

10) Using the iXflash Q mini as a microSD Card reader on your phone



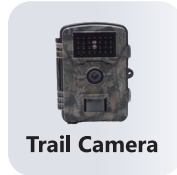
Drone



Dash Camera



Action Camera



Trail Camera

For iPhone/iPad with USB-C connection:

- ★ Take the microSD card from a drone, dash cam, action camera (like Go Pro), or other similar devices and insert it into the iXflash Q mini
- ★ Connect the iXflash Q mini to your iPhone/iPad with a USB-C connection
- ★ Open the iXflash App
- ★ Tap on the iXflash tile
- ★ Select the folder associated with the device you want to view the video from
- ★ Select the video by tapping on it and enjoy



11) Index of all iXflash Functions & Settings on the Home Screen



Camera icon :

Record live videos & take pictures that will be stored directly onto the microSD card in the iXflash Q mini.



Photos / Videos icon :

Shortcut to all pictures/videos stored on the microSD Card inside the iXflash Q mini and iXflash App on the iPhone/iPad.



iXflash icon :

View and manage all content stored on the microSD card inserted into the iXflash Q mini.



iPhone icon :

View and manage all content temporarily stored on the iXflash App located on your device.



Favorite icon :

View the list of files that you marked as favorite(s).



Backup & Restore icon :

Backup or restore all contacts, videos and photos from/to an iPhone/iPad.



Settings :

Adjust settings for the iXflash Q mini.



Continue



Continue



Continue



Continue

Continue icon :

One touch to continue viewing or playing the last file or media you opened.

