

COMPATIBLE DEVICES



Apple MacBook



iPhone/iPad



Android Phones/Tablets



Windows Laptops/PCs



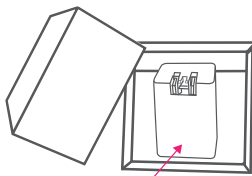
Chromebook

USING YOUR PRODUCT



Please read all the instructions before using the product.

1. Package Content

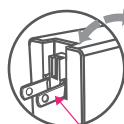


iXCharger 65W

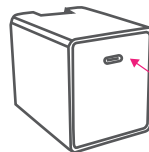
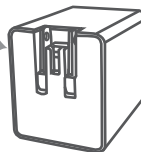


QRcode for Quick Start Guide

2. Product Layout



AC Plug



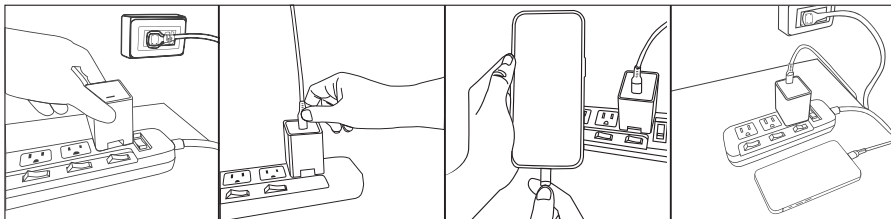
USB-C port

3. Getting Started with an iPhone/iPad

Made for

iPhone | iPad

Plug the iXCharger's AC plug into a power outlet. Use a charging cable with a USB-C connection on one side and a Lightning or USB-C on the other side that corresponds to the device you will plug into. It's suggested to use an Apple MFI certified charging cable to avoid any charging failures. Connect the USB-C end into the iXCharger's USB-C port and the other end (Lightning or USB-C) into the connection port for an iPhone or iPad (refer to the image below).



*When using a USB-C cable that is rated as USB 2.0, you will not be able to achieve the highest data transfer speeds, as you would with a USB 3.0 version.

**In order to achieve power beyond 60W, the USB-C cable must be embedded with an E-Marker Chip. Check the cable specs to confirm.

3-1. Download APP

If this is the first time connecting your iPhone/iPad with an iXCharger, the system will prompt a message requesting you to download the iXCharger App. Please select the "App Store" to download the required App. If you do not see the prompted message, please go to the Apple App Store and search "iXCharger" to download or scan the accompanying QR code.



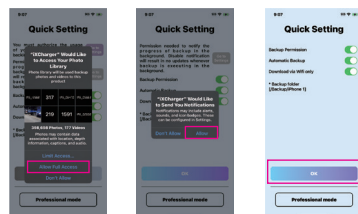
iXCharger 65W

Quick Start Guide

3-2. Setting Up the App for the First Time

The first time you open the iXCharger App, it will prompt messages requesting permission to access the iPhone/iPad photo album and allow notifications.

We recommend allowing all permission requests for best results. You may adjust these permissions in Settings.



3-3. App Home Page



Memory Used:

Shows % of memory used from the total iXCharger capacity



Read Only (On/Off Switch)* :

Turns on/off Read Only, which prevents any content on the iXCharger from being altered or deleted.



Backup icon:

Backup all videos and photos stored on the iPhone/iPad



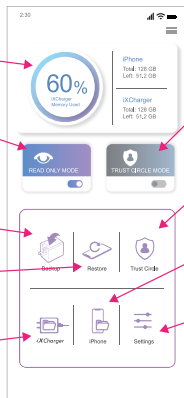
Restore icon:

Restore all videos and photos stored on the iXCharger onto your iPhone/iPad(s).



iXCharger icon:

View all content stored on the iXCharger



Trust Circle (On/Off Switch)* :

Turns on/off Trust Circle, which limits who can access any data stored on the iXCharger



Trust Circle icon:

Shows members in Trust Circle and allows the owner of the account to add or remove members. (Each member can remove themselves)



iPhone icon:

View all content stored on the iXCharger App in your iPhone/iPad



Settings:

Adjust settings for iXCharger.

*Trust Circle and Read Only cannot both be toggled on at the same time. Must use one or the other or turn both off.

4. Accessing the iXCharger through a computer or Android smartphone or tablet

1. Use a USB-C to (USB-A or USB-C) cable to connect the iXCharger to an Android device or computer's corresponding USB port.
2. Open the drive folder on your Android device or computer associated with the iXCharger, similar to accessing a standard USB drive.
3. Just like connecting to a USB, you can now view or access* all files stored on the iXCharger.
4. Be sure to properly eject the iXCharger before disconnecting from the computer.
5. The iXCharger is capable of operating under Bus Power and does not need to be connected to a power source to access data through a computer, laptop, smartphone, or tablet with a USB-C connection.**



*If you cannot access the iXCharger on a computer, you may have the Trust Circle security turned on. You will need to disconnect from the computer and connect to an iPhone or iPad to turn off the Trust Circle and then reconnect to the computer.

**To utilize the device's charging feature, it must be plugged into an AC power source.

SPECIFICATION

iXCharger 65W A			
Model Name			
Dimension (L x W x H)	2.25 x 1.65 x 1.90 in / 57.2 x 41.8 x 48.3 mm	Hold-up Time	> 5ms at 100Vac/60Hz & max load
Weight	4.9oz/ 140g (US plug)	Power Density	9.22 W/in ³
Power Rated	65W	Power Factor	NA
Input Voltage	90Vac ~ 264Vac	Operating Temperature	32°F to 95°F / 0°C to 35°C
Output Voltage	5V, 9V, 12V, 15V, 20V	Storage Temperature	14°F to 176°F / -10°C to 80°C
Constant Current	0-3A @ 5V, 9V, 12V, 15V , 0-3.25A @ 20V	Operating Humidity	5% - 95% RH
Peak Load	120% @ 5V, 9V, 12V, 15V , 110% @ 20V	Input AC Plug	Wall-Mount type
Efficiency	> 88%	Output Connector	One USB-C output
Transient Response	Output voltage within +/-10% for 9V, 12V, 15V, 20V, 5.75V~4.25V for 5V	Safety	IEC 62368-1, UL 62368-1, EN 62368-1

ATTENTION

- This product is designed for use with personal computing devices and related IT equipment.
- Please do not use the device if the ambient temperature is above 35°C / 95°F.
- In case of broken plug in prongs, the product should no longer be used as a charging device, but can still be accessed and used for external storage.
- If you want to clean the product, only use a dry cloth or brush.
- It's recommended to connect this device to an AC plug that is near and easily accessible to the device it's being connected to.
- Any failure related to this product, especially the power supply, should only be inspected and or repaired by an authorized agent. Contact us to find an authorized agent for your location.

SAFETY STATEMENT

FCC Statement

This device complies with Part 15 of the FCC Rules. Operation is subject to the following two conditions:

1. This device may not cause harmful interference.
2. This device must accept any interference received, including interference that may cause undesired operation.

Important: This equipment has been tested and found to comply with the limits for a Class B digital device, pursuant to Part 15 of the FCC Rules. These limits are designed to provide reasonable protection against harmful interference in a residential installation. This equipment generates, uses, and can radiate radio frequency energy and, if not installed and used in accordance with the instructions, may cause harmful interference to radio communications. However, there is no guarantee that interference will not occur in a particular installation. If this equipment does cause harmful interference to radio or television reception, which can be determined by turning the equipment off and on, the user is encouraged to try to correct the interference by one of the following measures:

- Reorient or relocate the receiving antenna.
- Increase the separation between the equipment and receiver.
- Connect the equipment into an outlet on a circuit different from that to which the receiver is connected.
- Consult the dealer or an experienced radio/TV technician for help.

Warning:

Changes or modifications not expressly approved by the party responsible for compliance could void the user's authority to operate the equipment.

Responsible party (contact for FCC matters only):

Company name: Vinpower, Inc.

Email Contact: support@vinpowerdigital.com

ISED Canada Compliance

This digital apparatus complies with CAN ICES-3(B)/NMB-3(B).

This device complies with Industry Canada license-ICES-003. Operation is subject to the following two conditions: (1) This device may not cause interference, and (2) This device must accept any interference, including interference that may cause undesired operation of the device.

Declaration of Conformity

Vinpower Digital, Inc. hereby declares that this product is in compliance with the Directive 2014/30/EU.

A copy of the EU Declaration of Conformity is available at <https://www.vinpowerdigital.com/downloads>



Indoor use only



This symbol indicates that this product shall not be treated as household waste. Instead it shall be handed over to the applicable collection point for the recycling of electrical and electronic equipment.



**CUSTOMER
SERVICE**

3-year limited warranty

✉ support@vinpowerdigital.com